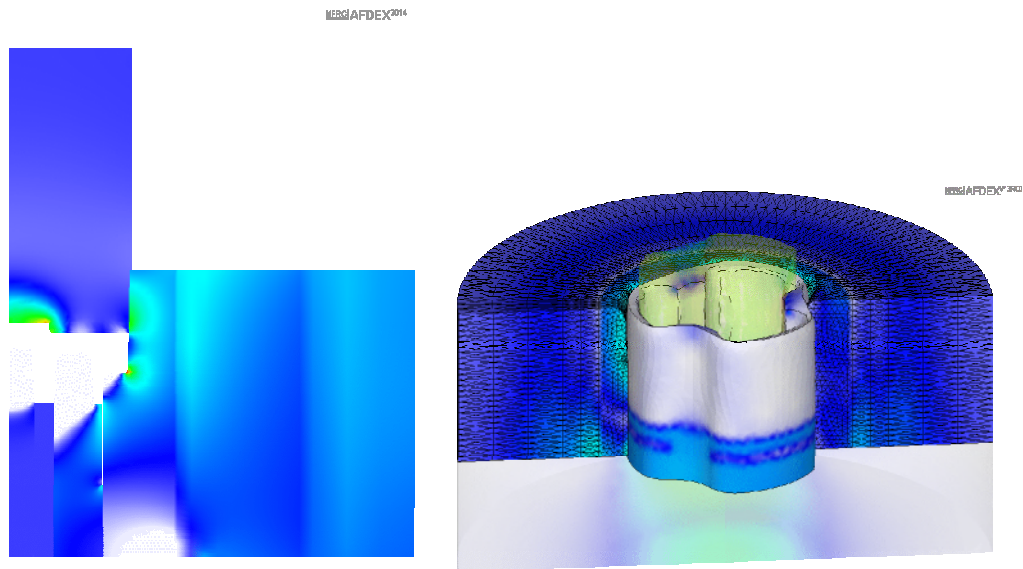


# MFCAE 2016



© Date: August 18<sup>th</sup> - 19<sup>th</sup>, 2016

© Venue: Ramada Ballroom, Ramada Plaza Hotel, Jeju Korea

© Organized by MFRC

# Program of MFCAE 2016

## Ramada Ballroom, Ramada Plaza Hotel

Date	Program		Presenter
Aug. 18 <sup>th</sup> (Thu.)	13:00~13:30	Registration	
	13:30~15:20	Opening ceremony	M. S. Joun (MFRC, GNU)
		State-of-the-art of AFDEX	M. S. Joun (MFRC, GNU)
		Forging simulation considering die elastic deformation	S. H. Chung (MFRC)
		Academic applications of AFDEX	S. M. Hong (Kongju Nat'l Univ.)
		Skill of defining partial region and its application to optimal mesh generation and the like	M. C. Lee (MFRC)
		Study on microstructural evolution using AFDEX	Y. W. Zhai (BRIMET)
	15:20~15:40	Coffee break	
	15:40~18:20	The effect of friction factor on the flowline of the forged hub and a novel method of determining the friction factor	C. L. Hu (Shanghai Jiaotong Univ.)
		Process optimization using AFDEX and Hyperstudy	H. K. Kim (Altair Korea)
		The development of forging technology for auto-parts industry in China	Y. W. Zhai (BRIMET)
		State-of-the-art Korean forging technology with emphasis on metal forming simulation	Y. G. Choi (Samwoo)
		Forging simulation based process design of automatic multi-stage cold forging	G. M. Kim (SungjinFOMA)
		Roll forging simulation and its verification	H. T. Jin (Gyeongsang Nat'l Univ.)
		Application of AFDEX to optimal process design of metal forming processes	GISPAM (Mexico team 1)
		Application of AFDEX to optimal process design of metal forming processes	GISPAM (Mexico team 2)
	18:30~20:30	Banquet	
Date	Program		Presenter
Aug. 19 <sup>th</sup> (Fri.)	08:00~11:00	New features of AFDEX V16	J. G. Eom (MFRC)
		How to use special functions of AFDEX	M. C. Kim (MFRC)
		Finite element analysis of a hub bearing process considering press deflection	A. Meena (Gyeongsang Nat'l Univ.)
		Fixed scroll forging simulation and its verification	Y. S. Kim (Gyeongsang Nat'l Univ.)
		Elastic deformation of tools by AFDEX elasto-plastic finite element analysis	H. D. Kim (Seoul Nat'l Univ. of Sci. and Tech.)
		Elasto-plastic finite element analysis of bulge cup progressive process by AFDEX	S. M. Jo (Seoul Nat'l Univ. of Sci. and Tech.)
		Poster presentation and consultations (Over 40 posters prepared by developers for special problems and oral presenters as well as the users will be displayed and in-depth discussions will be made together with users and developers in front of each poster)	
	12:00~13:00	Luncheon	
	13:00~18:00	In-depth consultations on the simulation of specific metal forming processes	

※ Some contents or the program schedule can be changed as the case may be.